

Studio Four

Manhattan Daylight studio

Address

775 Washington St, New York, NY

Size

1,500 sq ft

Ceiling Height

14 to 24 ft domed ceiling (rigging capability)

Light

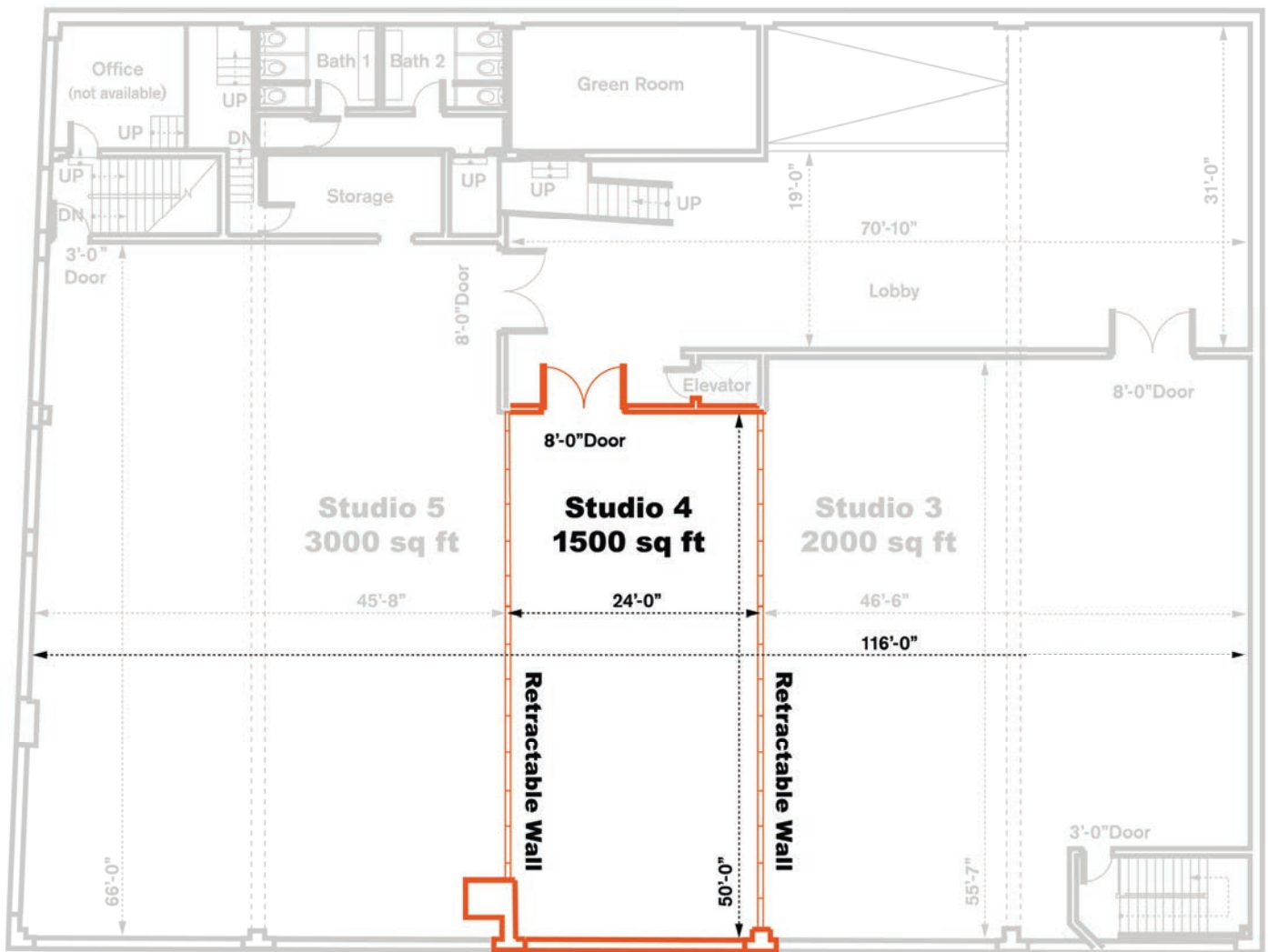
Windows and skylight, black-out capability

Power

100 amp 3-phase power

Additional

Second level, can be combined with Studios 3 and 5.



INDUSTRIA



INDUSTRIA

