

Studio Three

Manhattan
Large studio with skylight

Address

775 Washington St, New York, NY

Light

Windows and skylight, black-out capability

Additional

Second level, car accessible, can be combined with Studio 4.

Size

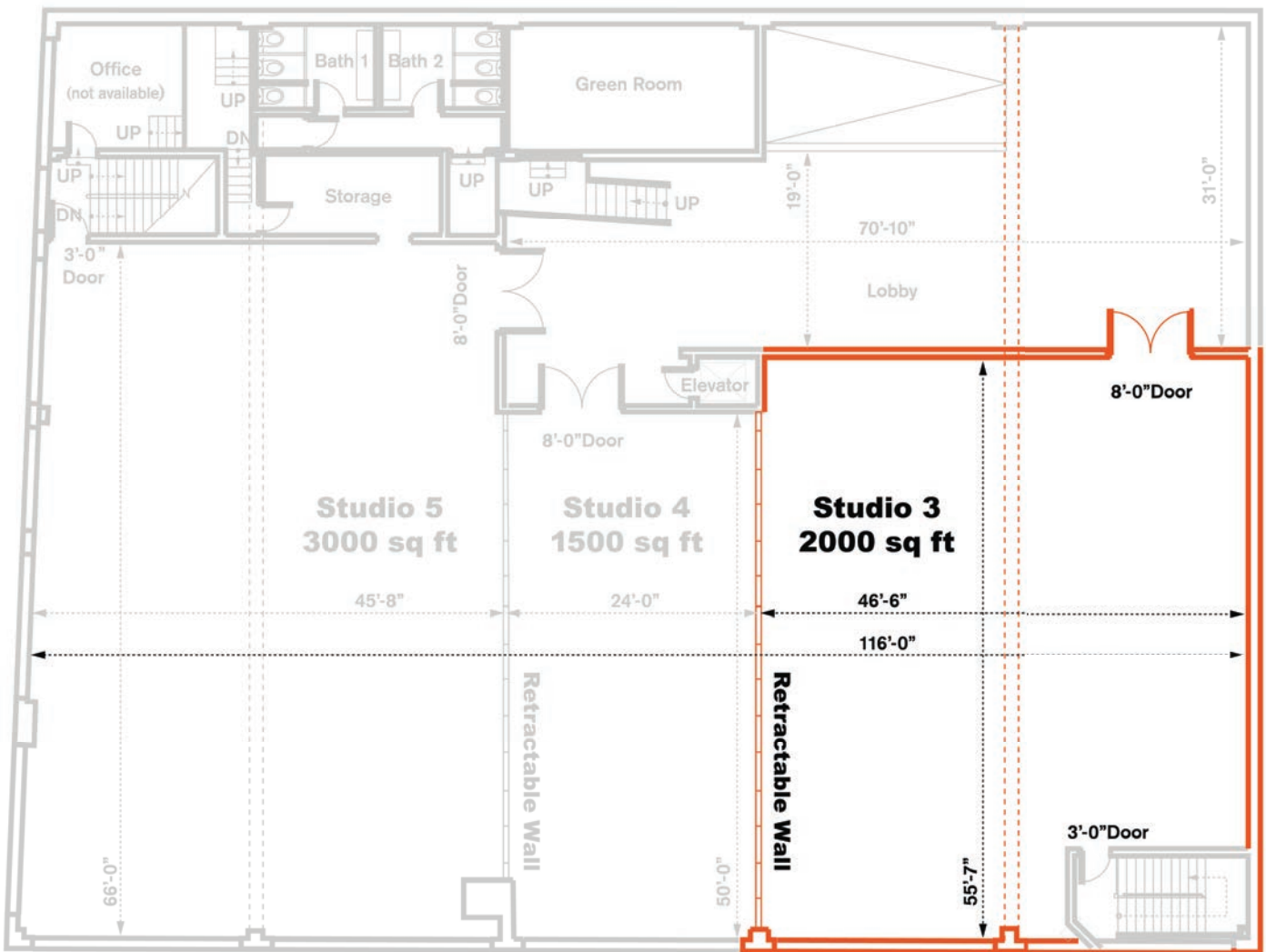
2,000 sq ft

Power

2x 100 amp 3-phase power

Ceiling Height

14 to 24ft domed ceiling (rigging capability)



INDUSTRIA



STUDIO 3 & 4 COMBINED/AIR-WALL OPEN