

Studio One

Manhattan
Ground level studio with green room

Address

775 Washington St, New York, NY

Ceiling Height

13.5 ft (11.5 ft to ceiling trusses)

Additional

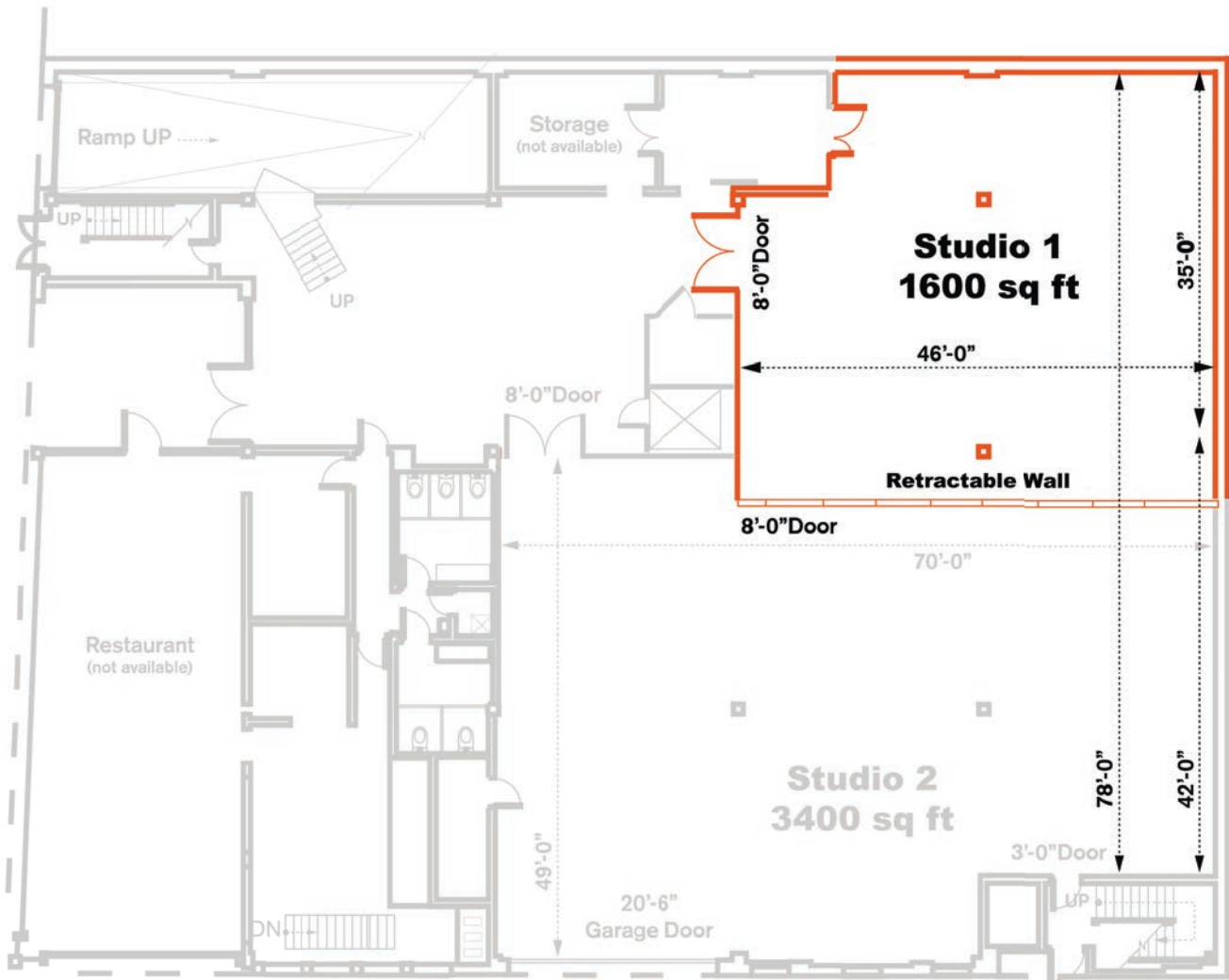
Ground level, can be combined with Studio 2.

Size

1,600 sq ft

Power

100 amp 3-phase power



INDUSTRIA



STUDIO 1 & 2 COMBINED/AIR-WALL OPEN